



IMPACT Therapy™ Device

MAX

Instruction Manual



IMPACT Therapy™

Congratulations on purchasing your very own truMedic® IMPACT Therapy™ Device MAX. This massager was Designed for the serious athlete, body builder and fitness guru.

This powerful, 24 volt, high-performing device features deep tissue percussion for muscle pain relief. With five increasing speed settings and six interchangeable heads, the truMedic® truRelief™ IMPACT Therapy™ Device Max will help relieve sore muscles and allow you to recover from even the most strenuous workout faster. The rechargeable battery and wireless functionality make it so convenient to use anytime at the gym or at home.



SAVE THESE INSTRUCTIONS



WARNINGS & CAUTION

Please read and observe all instructions before use.

- **Protect your skin:** Friction soreness or redness may occur when used in direct contact with the skin. Always have a garment or cloth between the impact head and your skin.
- **Protect your fingers:** Never place your finger or any object where the IMPACT Therapy™ heads connect to the device (near the piston head) while in use
- **Protect your children:** This product is intended for adult use only.
- **Protect your unit:**
 1. *Use only the massage heads and A/C charger provided by truMedic® and always only as instructed by truMedic®.*
 2. *Do not use it in the bath, shower, by or in the pool or hot tub. Keep this unit away from liquids and never immerse in water.*
 3. *Do not overheat. Keep ventilation ports clear, uncovered, dust free and away from debris and heat sources*
 4. *Give it a break. After an hour of use, let it rest for 30 minutes.*
 5. *Do not overcharge - Charge the unit for 3 hours maximum to prevent overcharging*
 6. *Do not void the warranty. The warranty shall be void if the Impact Therapy™ Device MAX is disassembled, any parts are removed or if the unit is not protected as instructed in items 1 - 5 above. Contact truMedic® if the device stops working or any parts become damaged,*
- **Protect yourself:**
 1. *Consult your doctor before using this product. Do not use it if you are injured or ill or have a condition that may be irritated or worsened by use of this massage product..*
 2. *Do not attempt to take this unit or charger apart. Disassembly and reassembly can potentially result in electric shock or fire, and exposure to battery chemicals can cause skin/ eye burns or irritation.*



SAFETY INSTRUCTIONS

Please read and observe all instructions before use.

- Start slowly and for short periods to learn how your body reacts to the massage stimulation.
- Be aware when using this unit near or around children. Supervision may be necessary when used near children or by/on immobile or disabled individuals. Do not allow children to play with the Impact Therapy™ Device MAX or the ac adapter.

- Do not use this unit under blankets, clothing, towels, or anywhere ventilation could be restricted.
- Use only over clothing, lightly press and move the unit along the body.
- Do not allow any vents to be clogged or covered with dust, lint, hair, fabric, bedding or anything that in any way can obstruct the airflow into the unit.
- Be careful with loose items such as hair, clothing, jewelry, etc. so as to prevent entangling in moving parts or blocking unit vents.
- Use the Impact Therapy™ Device MAX safely on general body areas. Avoid sensitive areas of the body i.e., do not use around the throat, head or genitalia. Avoid causing discomfort or pain by overuse or by applying too much pressure.
- Select the head that suits the need best.
- Avoid bruising by frequently checking the area being treated for discomfort or pain. Discontinue use if discomfort or pain occurs. Depending on the individual, discomfort or pain can happen at any setting or pressure.
- The area behind the massage head can cause injury to fingers or loose skin/body parts if they are allowed to be caught in that area while the unit is in operation. Also, do not allow loose or long hair to get caught and tangled in this part of the unit.
- Keep the Impact Therapy™ Device MAX away from liquids and do not use it in the bath shower, hot tub or pool. Prevent the unit from being immersed in water and always keep the vent ports clear of any obstruction.
- Contact truMedic® if the Impact Therapy™ Device MAX is not working properly to arrange for repairs. Take care to not drop the unit and do not use it if it was left outdoors, damaged, or subjected to water. .
- Only recharge with the 100-240V AC 50/60 Hz 0.5A max charger supplied with the unit. Only replace parts with genuine truMedic® components.
- Before each use, check over the unit thoroughly.
- Repairs by the consumer are not safe and will void any warranty
- Use caution when charging the Impact Therapy™ Device MAX. Do not leave the unit unattended while charging, do not charge the unit in a wet environment, outdoors or near any water. Do not charge the unit near any flammable products or atmosphere (natural gas, gasoline dust, paints or thinners, etc.



SAFETY INSTRUCTIONS CONTINUED

Before using the Impact Therapy™ Device MAX, or any vibration/massage device please obtain approval from your doctor if you are pregnant, have a medical device implanted in your body, any joint replacements or health concerns/issues, if you are on medication or under a doctor's care. Please use caution and common sense.

Pregnancy, diabetes with complications such as neuropathy or retinal damage, use of pacemakers, recent surgery, epilepsy or migraines, herniated disks, spondylolisthesis, spondylolysis, or spondylosis, recent joint replacements or IUDs, metal pins or plates or any concerns about your physical health. Frail individuals and children should be accompanied by an adult when using any vibration device. These contraindications do not mean that you are not able to use a vibration or exercise device but we advise you to consult a doctor first.

Ongoing research is being done to the conducted regarding the effects of vibration exercise for on specific medical disorders. This will likely result in the shortening of the list of contraindications as shown above. Practical experience has shown shows that the integration of vibration exercise into a treatment plan is advisory in certain several cases. This must be done on under the advice and supervision of in accompaniment with a doctor, specialist or physiotherapist.



Benefits of **IMPACT Therapy™**

IMPACT Therapy™ helps relax strained and tired muscles after workouts or physical activity. The truRelief™ IMPACT Therapy™ Device MAX uses quick and focused taps of energy that impact the muscle and break up knotted tissue. This process is intended to stimulate blood flow to affected areas of the body, making this a great tool to use prior to and after a workout to help relax and relieve the muscles.

Included in Box:



truRelief™ IMPACT Therapy™
Device MAX



6 Interchangeable
Massage Heads



Carrying Case




AC Wall Adapter

IMPACT Therapy™ Device MAX Specifications

Battery Capacity:	2400mah
Power:	100-240W~50/60Hz
Frequency:	21hz 28hz 33hz 44hz 46hz 55hz
Battery Endurance:	1.1-5h
Torque Range:	0-8.5kg/cm
Power Input:	100-240V ~ 50/60Hz
Motor Type:	High-torque Brushless Motor
Amplitude:	12mm
Intelligent Mode:	10 Min Smart Timing

Operation

- To start the unit, hold down the power  button for 3 seconds .
- Once the unit is on continuing to press the power button will increase the power level (1-5). When you reach power level 5, press the button once to reach standby mode.
- To turn the device off hold down the power button for 3 seconds. The device will automatically power off if it is left in standby mode for 15 seconds.

NOTE: The unit is designed to turn off after 10 minutes. Hold the power button to resume massage.



Massage Heads

To provide a more comfortable massage experience, use each attachment for its intended use. With 6 different massage heads for different parts of the body, each attachment offers a different relaxation technique.



Ball

Rounded surface that works deeply into the muscle



Flat

Designed to serve the larger areas of the body.



Cylinder

Designed for the smaller, tighter area of the body where a focused energy is desired.



Fork

Best choice for the areas where you would span a muscle or bone.



Wedge

Scraping tool for Targeting shoulder blades and IT bands.



Cushion

Mainly used for targeting joints.



Attaching and Removing
the Massage Heads

Maintenance, Cleaning & Storage

- Always turn the device off before cleaning.
- Use a slightly damp towel to clean the device and dry with a soft cloth.
- Never store in direct sunlight or at temperatures above 104°F (40°C).
- Do not allow liquids to enter the unit.

Charging

- The Impact Therapy™ Device MAX will operate up to 4 hours (speed level and pressure applied will effect the run time). Fully charge the battery for up to 2.5–3 hours before first use.
- To charge the unit, connect the DC end of the supplied adapter to the battery's charging port and plug the A/C side of the cable into a wall outlet.
- The battery does not have a memory and can be recharged from any charge level
- It is advisable to not fully deplete the battery before recharging.
- The device will automatically shut off after 10 minutes of usage. Touch the power button to start your massage session again.
- The average run-time on a single charge is up to 180 minutes depending on speed level and pressure applied during use.
- Do not leave the charger plugged into the wall outlet when not in use.
- Protect the charger wire from damage by rocking chairs or other furniture and choose a charge location where the wire won't be a trip hazard.
- Do not use a charger that has wire or body damage, replace it in a timely manner
- Always remove the charger from the wall outlet by the plug, never by the cord.
- Handle the charger with care, do not over extend the wire or allow it to come in contact with heat or sharp objects

Warranty

truMedic® warrants this product against defects in materials and/or workmanship for a period of 6 Months from the date of purchase by the original purchaser. **You must register your product within 10 days to qualify for a free upgrade to your warranty from 6 months to one full year at no cost.** In the event of a valid claim within the Warranty Period, truMedic® will repair the defect or replace the unit at no charge, using new or refurbished replacement parts at its discretion. Proof of purchase is required prior to receiving service under this warranty.

Warranty service is available by calling truMedic® service at **(888)264-1766** or via email at **service@truMedic.com**. You are responsible for delivery and the cost of delivery of the product to a truMedic® service center for replacement or repair, truMedic® will pay for delivery charges on returns.

This warranty does not cover damage caused by failure to follow instructions, or damage caused by accident, abuse, misuse, fire, flood, earthquake or other external causes, or damage caused by unauthorized repairs.

TRUMEDIC® SHALL NOT BE LIABLE FOR INCIDENTAL OR CONSEQUENTIAL DAMAGES RESULTING FROM THE USE OF THIS PRODUCT, OR ARISING OUT OF ANY BREACH OF THIS WARRANTY. TO THE EXTENT PERMITTED BY APPLICABLE LAW, TRUMEDIC® DISCLAIMS ANY AND ALL STATUTORY OR IMPLIED WARRANTIES, INCLUDING, WITHOUT LIMITATION, WARRANTIES OF MERCHANTABILITY, FITNESS FOR A PARTICULAR PURPOSE AND WARRANTIES AGAINST HIDDEN OR LATENT DEFECTS. IF TRUMEDIC® CANNOT LAWFULLY DISCLAIM STATUTORY OR IMPLIED WARRANTIES, THEN TO THE EXTENT PERMITTED BY LAW, ALL SUCH WARRANTIES SHALL BE LIMITED IN DURATION TO THE DURATION OF THIS EXPRESS WARRANTY.

Some states disallow the exclusion or limitation of incidental or consequential damages or how long an implied warranty lasts, so the above exclusions or limitations may not apply to you. This warranty gives you specific legal rights and you may also have other rights, which vary from state to state.

Other truMedic® Products



MagicHands™ Neck & Back Massager



The truMedic® MagicHands™ truShiatsu™ Neck and Back Massager with Heat is our most advanced, high-performance massage unit yet. This massager is designed with a patent-pending mechanism that is made to recreate the touch of a professional masseuse. It delivers a powerful massage that is so lifelike, you will believe it is coming from a set of human hands!

Available Colors:   

Dream Machine™

Pillow Massager



Massage yourself into a deep sleep with truMedic's new state-of-the-art Dream Machine truShiatsu Rechargeable Pillow Massager with Heat. No wires required! The rechargeable Dream Machine Pillow Massager makes an excellent addition to any couch, chair, or bed.



truShiatsu™ PRO

Foot Massager

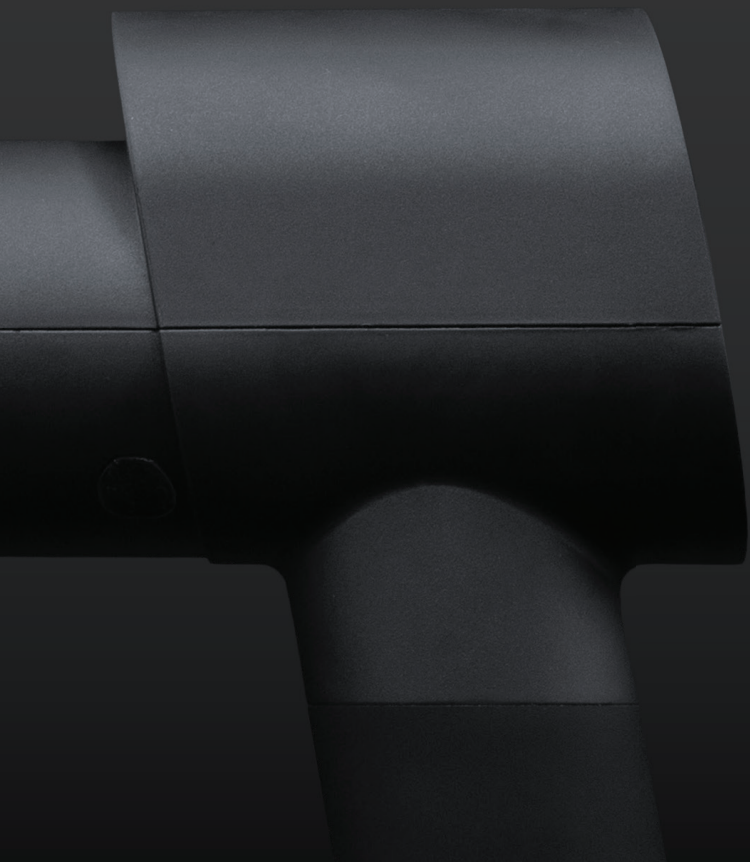


Treat your feet to a truShiatsu™ Massage. Enjoy a professional quality foot massage on your own time, in the comfort of your own home. The truShiatsu™ PRO Foot Massager provides the world's best in-home foot massager experience





IMPACT Therapy™ Device | **MAX**



truMedic[®]

TRUCORE DISTRIBUTORS, INC.

252 Indian Head Rd. Kings Park, NY 11754

(888) 264-1766 | service@truMedic.com | www.truMedic.com



[@truMedicMessage](#)