

InstaShiatsu+ Massage Chair MC-2000

Power Supply Replacement

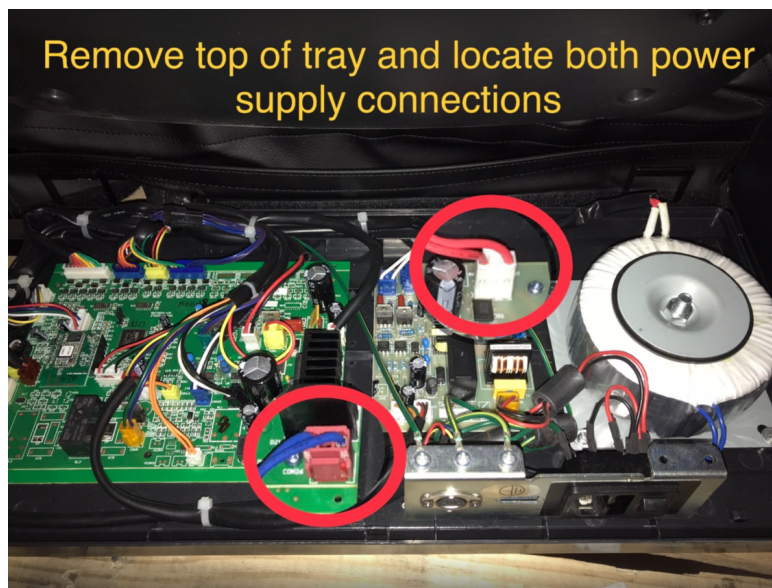
Please note: Before attempting to replace the power supply, ensure that the device is unplugged from the power source to prevent any electrical accidents.

1. Remove the top of the tray

- Identify the top cover of the tray that houses the power supply.
- Depending on the device, there may be screws or fasteners securing the top cover in place. Remove these screws using the appropriate screwdriver or tool.
- Carefully lift and remove the top cover, setting it aside in a safe place where it won't get damaged.

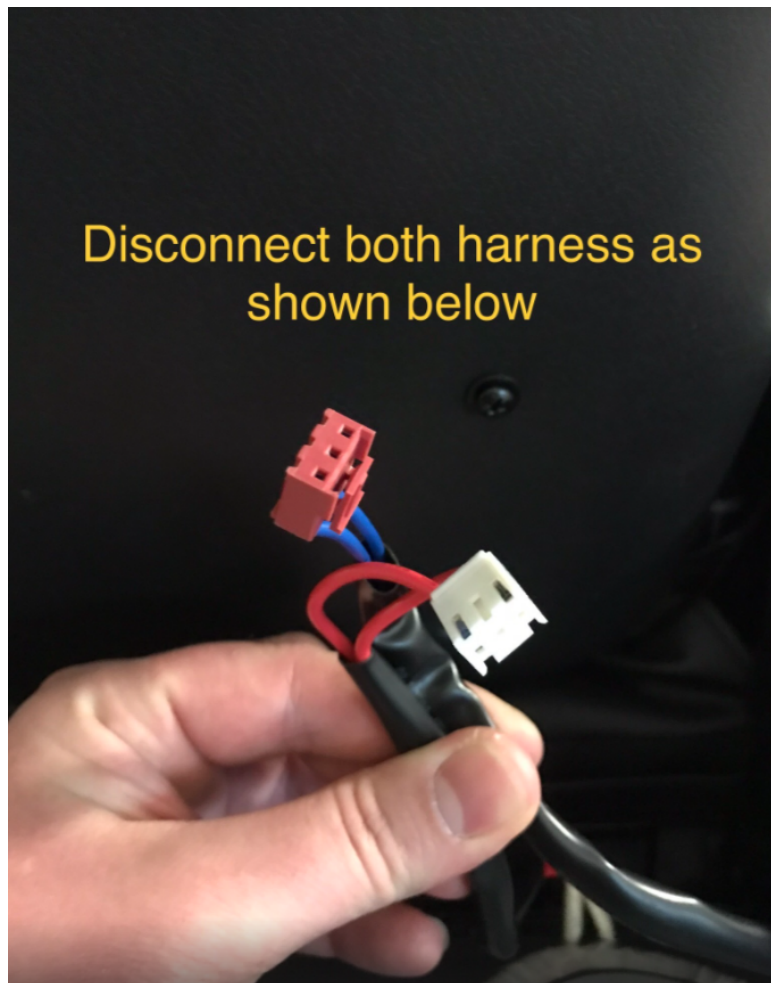
2. Locate the power supply connections

- Once the top cover is removed, you should be able to locate both power supply connections.
- These connections are typically secured with screws or connectors.
- Take note of the specific location and orientation of the power supply connections for later reference.



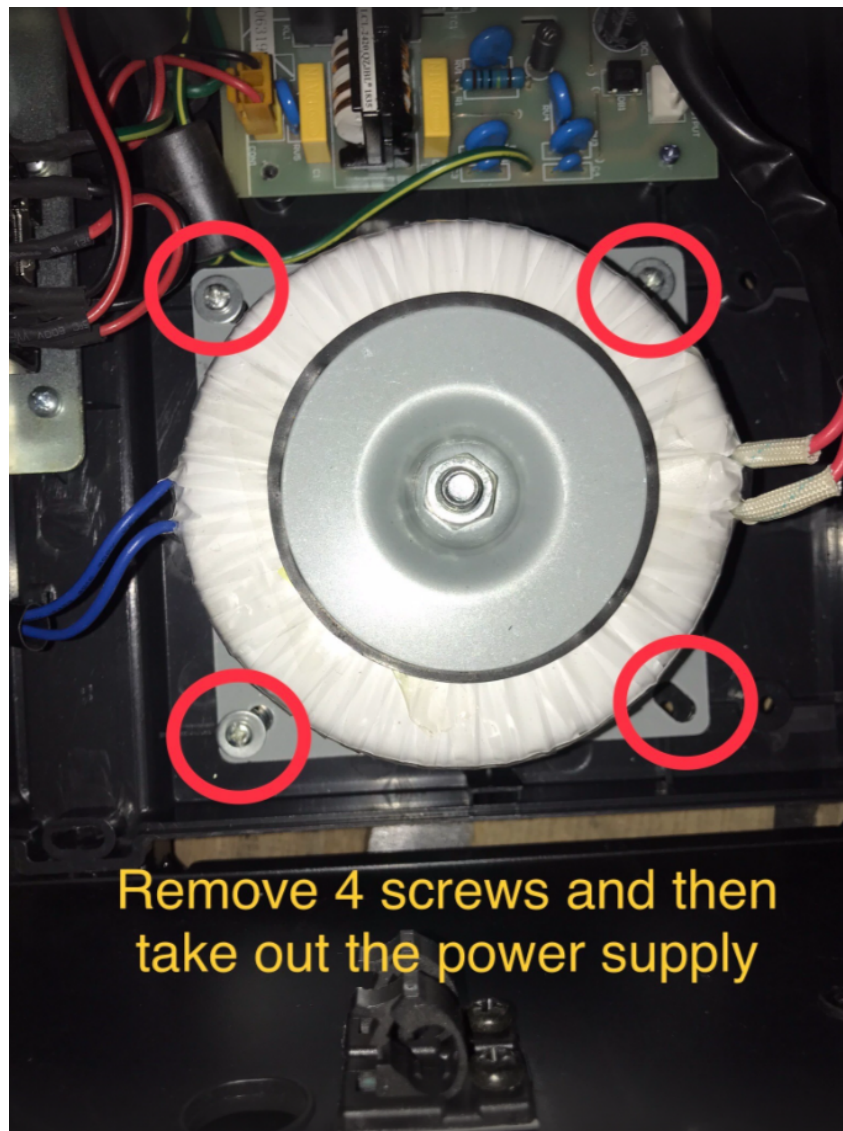
3. Disconnect the harnesses

- Locate the harnesses connected to the power supply.
- Depending on the connectors used, you may need to release clips, press buttons, or gently pull on the connectors to disconnect the harnesses.
- Follow the specific instructions or guidelines provided by the manufacturer for disconnecting the harnesses.



4. Remove the power supply

- Identify the screws or fasteners that are holding the power supply in place.
- Using the appropriate screwdriver or tool, carefully remove these screws.
- Once the screws are removed, gently take out the power supply from its current position. Be mindful of any cables or wires that may be connected to it.





A World Beyond Relief™

truMedic Canada, Inc.
2036 Ellesmere Road
Scarborough, Ontario M1H 2V6

888-264-1766 x203

www.trumedic.com

hr@trucooredistributors.com

payroll@trucooredistributors.com

By following these steps, you should be able to successfully replace the power supply.

Remember to exercise caution and work patiently to avoid any damage to the device or injury to yourself. If there are any additional steps or precautions specific to your device, please refer to the manufacturer's documentation or seek professional assistance for further guidance.

To install the replacement power supply, please follow the instructions provided in reverse order.