

# InstaShiatsu+ Massage Chair MC-1000

## MC-1000 Circuit Board Replacement

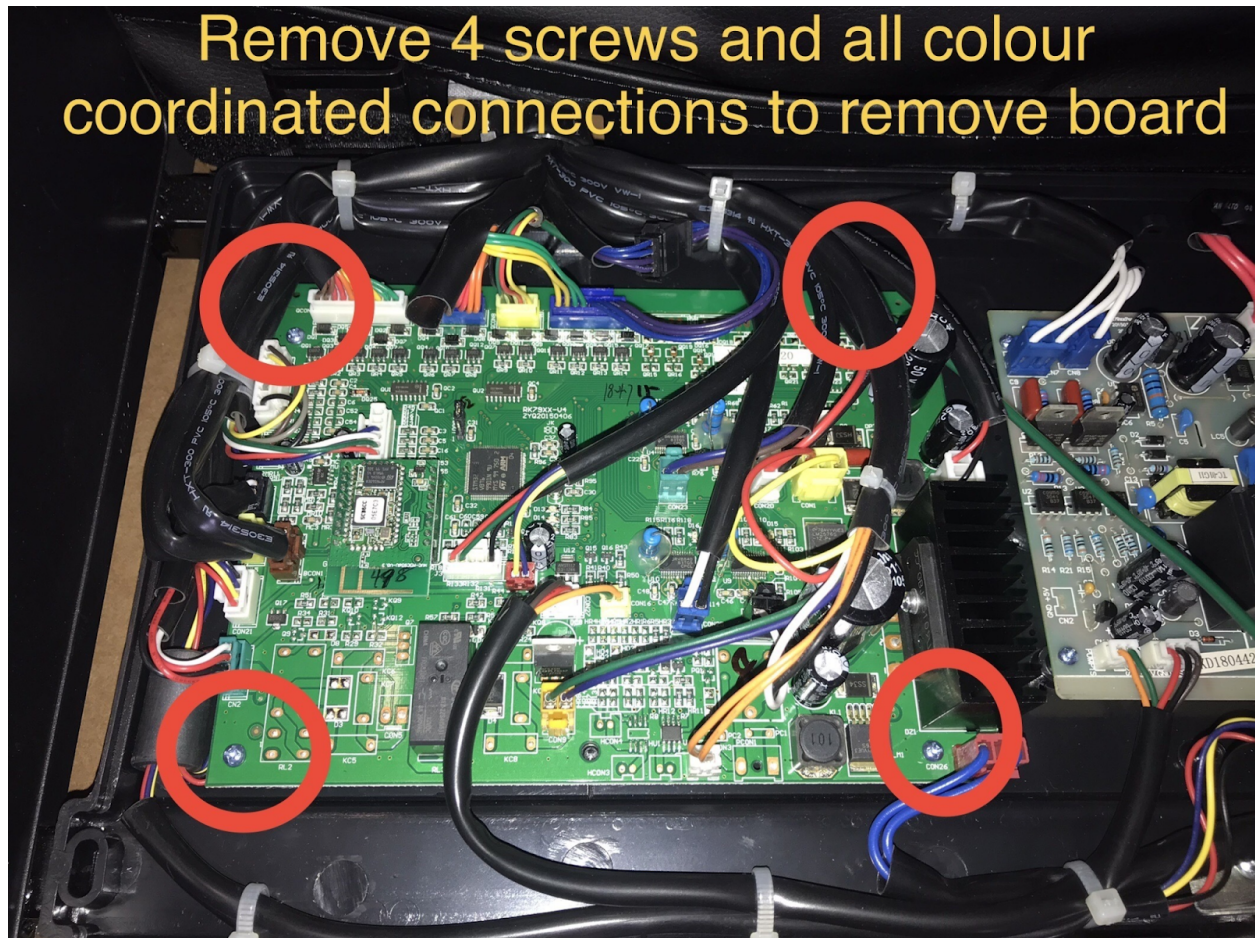
### 1. Remove the two screws and circuit board cover:

- Locate the two screws securing the circuit board cover.
- Use an appropriate screwdriver to remove these screws.
- Gently lift off the circuit board cover to expose the board underneath.



**2. Remove the four screws and color-coordinated connections to remove the board:**

- Identify the four screws holding the board in place.
- Using the appropriate screwdriver, carefully remove these screws.
- Disconnect all color-coordinated connections attached to the board. Take note of their positions or use labels for easier reassembly later.
- Lift the board out of its housing.



**3. To replace the board, follow the instructions in reverse:**

- Ensure the replacement board is compatible with your device.
- Position the board back into its housing, aligning it correctly.
- Reconnect all color-coordinated connections to their respective sockets or connectors.
- Insert and tighten the four screws to secure the board in place.
- Place the circuit board cover back on and fasten it with the two screws.

Note: It is crucial to handle the circuit board and its connections with care to avoid damage. If you encounter any difficulties or are unsure about any steps, it is recommended to consult the manufacturer's instructions or seek assistance from a professional to ensure proper removal and replacement of the board.

By following these improved steps, you can safely remove and replace the circuit board in your device, ensuring the proper functioning of your equipment.