

# InstaShiatsu+ Massage Chair MC-1000

## Remote Control Cord Replacement

### 1. Carefully remove the faceplate:

- The faceplate is held in place with double-sided tape. Use caution and be gentle during removal.
- To release the tape, you can use a precision knife or a similar tool to carefully lift the edges of the faceplate.



## 2. Remove the 6 Phillips head screws:

- Locate the 6 Phillips head screws securing the components.
- Use a Phillips screwdriver to remove these screws, ensuring to keep them in a safe place for reassembly.



### 3. Carefully separate the clamshell:

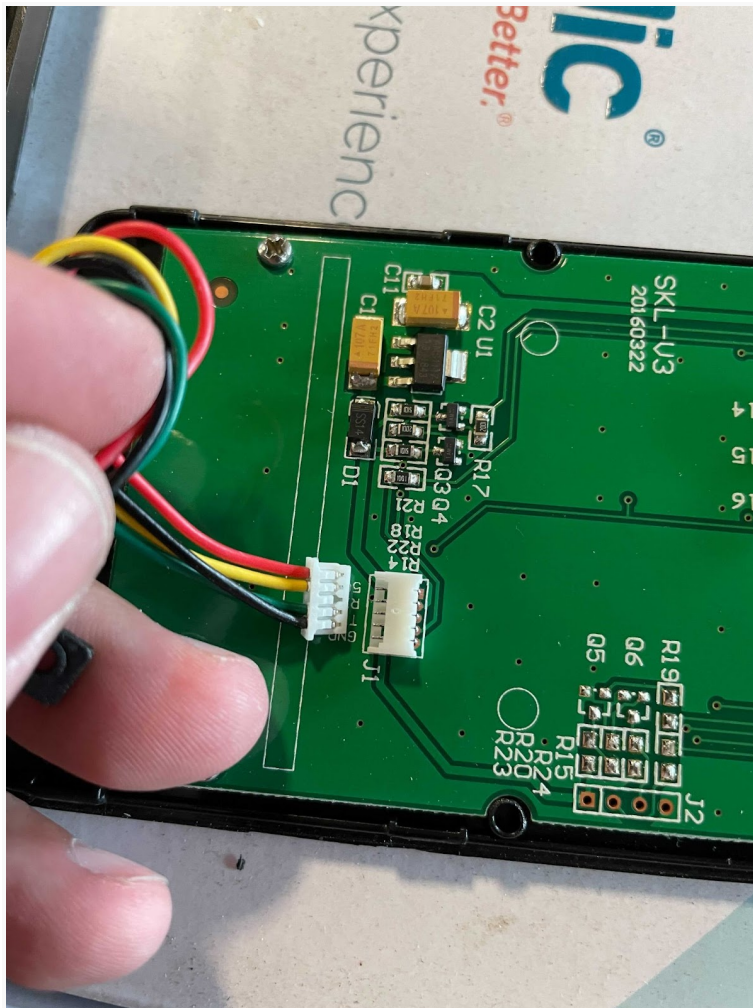
- After removing the screws, gently separate the clamshell housing the internal components.
- Take care not to damage any wires or fragile parts during this process.





#### 4. Remove the connector and replace it with the wire:

- Identify the connector that needs to be replaced.
- Disconnect the existing connector by carefully detaching it from its socket or release mechanism.
- Take the replacement wire and connect it securely to the appropriate socket or connection point.
- Ensure a proper and secure connection to maintain functionality.





A World Beyond Relief™

**truMedic Canada, Inc.**  
2036 Ellesmere Road  
Scarborough, Ontario M1H 2V6

888-264-1766 x203

[www.trumedic.com](http://www.trumedic.com)

[hr@trucooredistributors.com](mailto:hr@trucooredistributors.com)

[payroll@trucooredistributors.com](mailto:payroll@trucooredistributors.com)

---

Note: It is essential to exercise caution when handling delicate components and electrical connections. If you are unsure about any steps or encounter difficulties during the process, it is advisable to seek assistance from a professional or consult the chair's user manual for further guidance.

By following these improved steps, you can safely and effectively remove and replace the connector with the wire in your device.