

Coda Massage Chair

Circuit Board Replacement

Please note that disassembling and reassembling any complex equipment requires caution, and it's recommended to refer to the manufacturer's instructions or seek professional assistance if you're unsure.

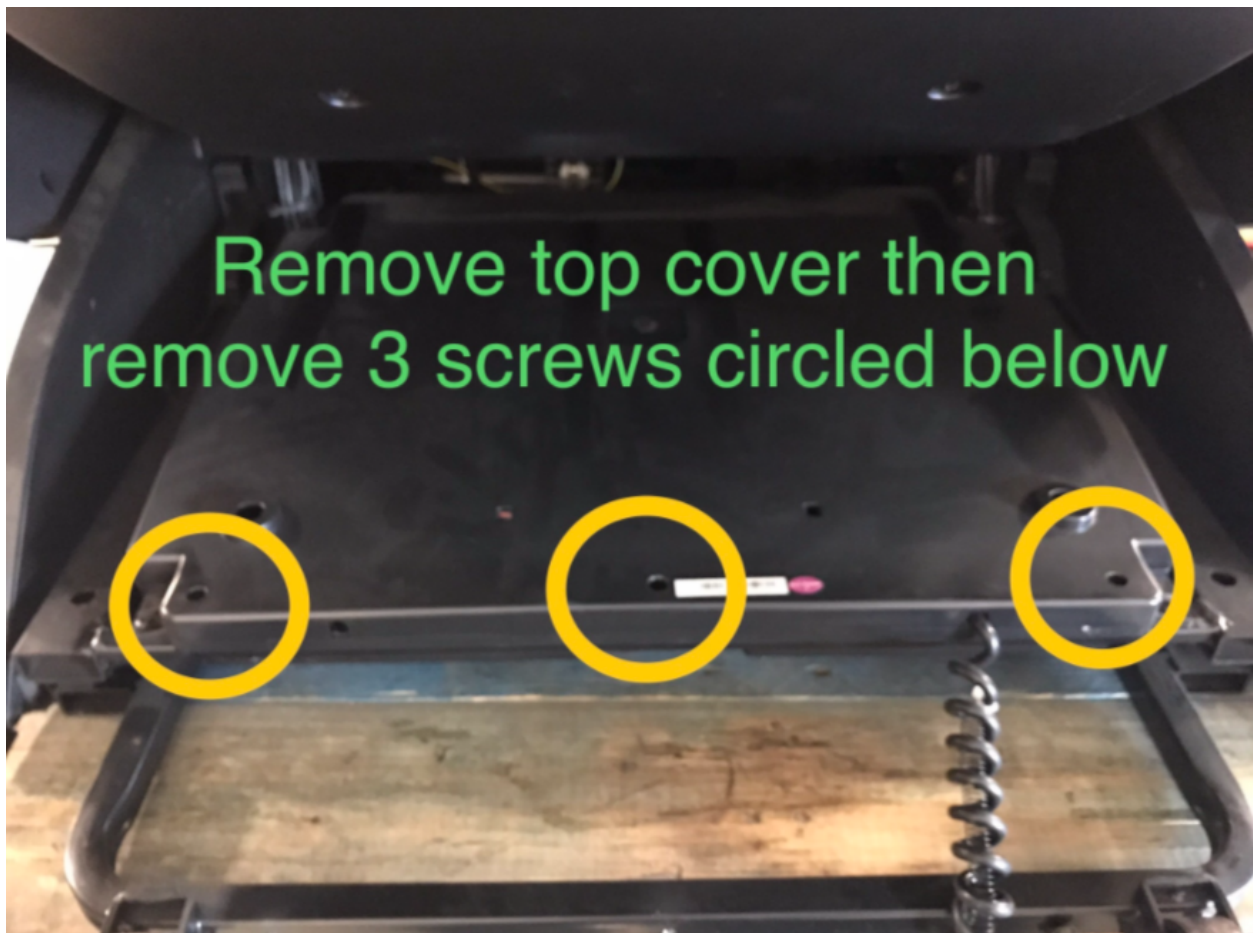
1. Remove Screws:

- Locate the three screws that secure the circuit board in place.
- Use an appropriate screwdriver to remove the screws, carefully setting them aside.



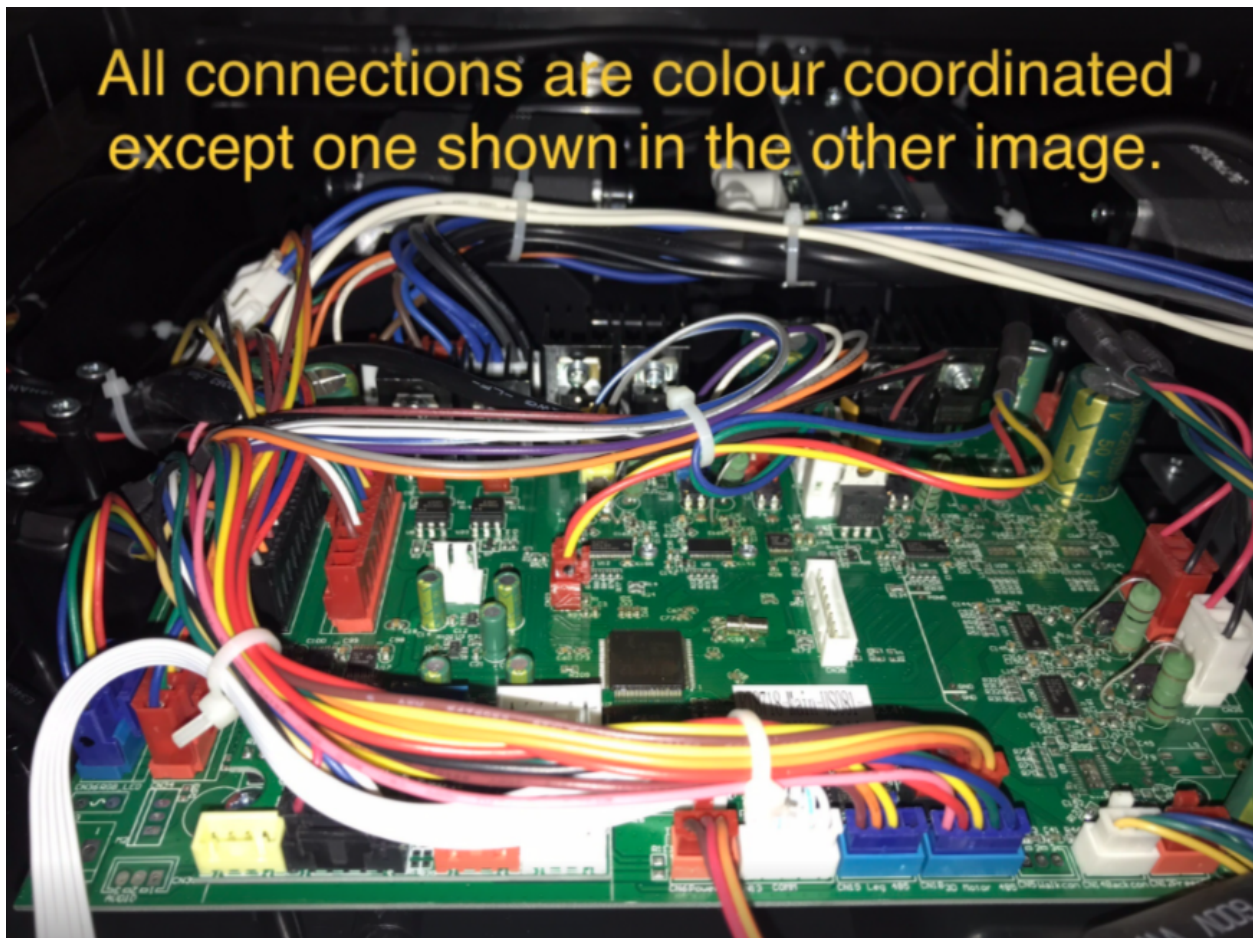
2. Remove Top Cover and Additional Screws:

- Identify the top cover of the massage chair and remove it.
- Once the top cover is removed, you will find three additional screws, as indicated in the image.
- Use the appropriate screwdriver to remove these three screws, keeping them separate from the previous screws.

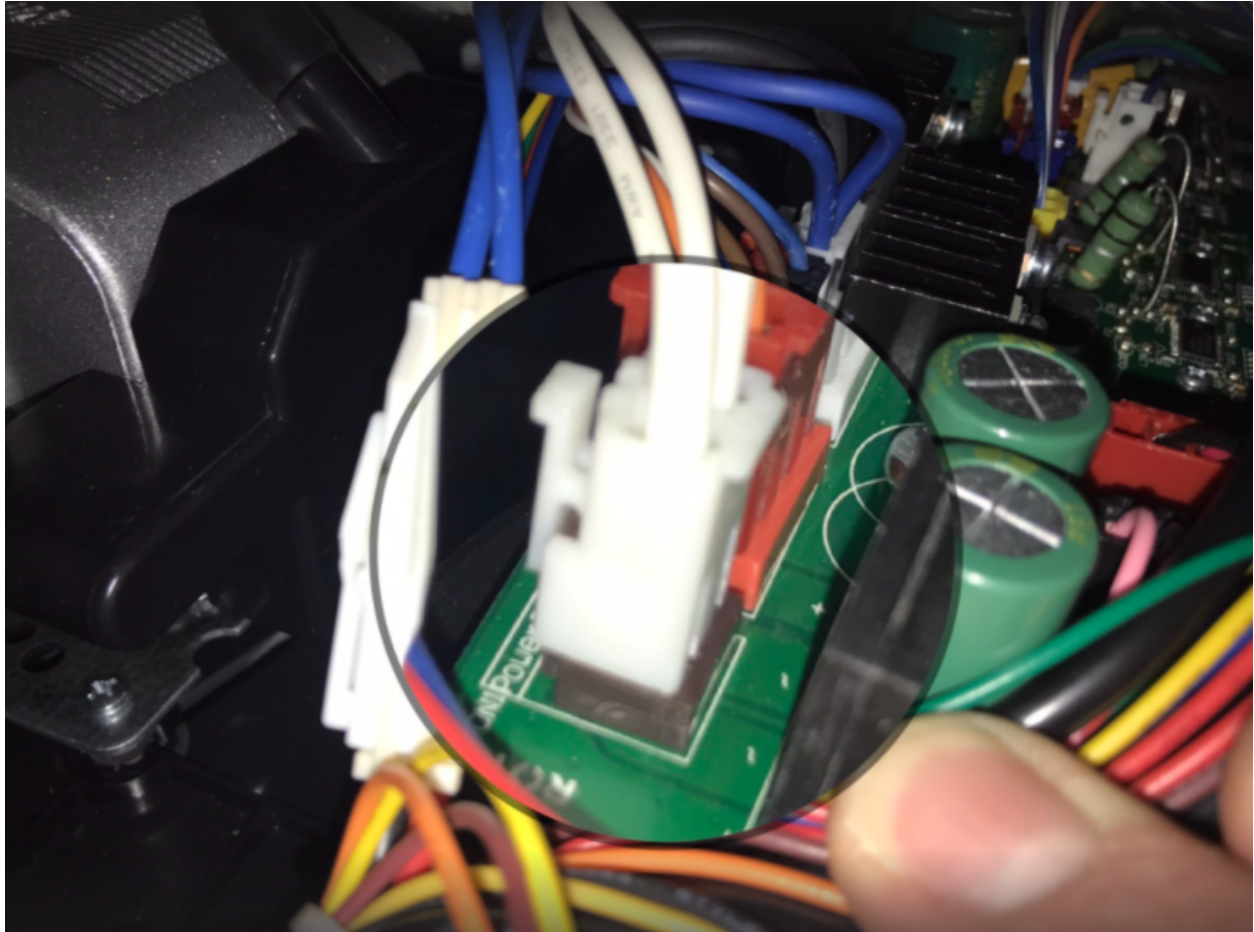


3. Identify Color-Coordinated Connections:

- Examine the connections on the circuit board.
- Most connections should be color-coordinated, making it easier to identify their respective locations.
- However, refer to the image provided for any specific connection that is not color-coordinated.







4. Disconnect Color-Coordinated Connections:

- Starting with the color-coordinated connections, carefully disconnect each one by gently pulling them apart.
- Take note of the locations and orientation of each connection to aid in reassembly later.

5. Address the Non-Color-Coordinated Connection:

- Identify the specific connection mentioned in the image that is not color-coordinated.
- Refer to the image provided and carefully disconnect this particular connection, ensuring you remember its location.

6. Remove the Old Circuit Board:

- With all the connections disconnected, gently lift the old circuit board out of its position.
- Take care not to bend or damage any components during this process.

7. Install the New Circuit Board:

- Place the new circuit board into the designated slot, aligning it properly.
- Ensure the board is securely seated and positioned correctly.

8. Reconnect Color-Coordinated Connections:

- Starting with the color-coordinated connections, carefully plug each one back into its respective location.
- Ensure they are fully inserted and secure, aligning them correctly according to their color-coding.

9. Reconnect the Non-Color-Coordinated Connection:

- Locate the connection mentioned in the image that is not color-coordinated.
- Refer to the image and connect this specific connection to its appropriate location, ensuring a secure fit.

10. Reassemble:

- Place the three screws back into their respective positions, following the steps in reverse order.
- Begin with the three screws that were circled below and then reattach the top cover.
- Finally, insert and tighten the remaining three screws to secure the circuit board.

You have now successfully replaced the circuit board in your Coda Massage Chair. Double-check all connections, screws, and covers before powering on the chair to ensure everything is properly installed.